



ProFiller 3600 is the only Inox (Stainless Steel 316) hand-held 300-hole filler that is dishwasher safe & can be used under a powder hood or in a glove box. The Change Parts and Orienter can also be used with the ProFiller 3700 bench-top filler for maximum flexibility.



### **Easier To Use**

- ❖ Easier to use than other 200 or 300 hole systems.
- ❖ Indicator gauges to assist in capsule orientation, separation and locking.
- ❖ Fits under powder hoods and in glove boxes.
- ❖ Includes a Capsule Locker for hard-to-lock powders.
- ❖ Video tips at [www.profiller.com](http://www.profiller.com). Well-illustrated manuals in multiple languages.

### **Pharmacopoeia & GMP Compliant**

- ❖ Fill weights, USP/EP method within  $\pm 1-3\%$  of average. More information at <http://www.profiller.com/3fw>.
- ❖ All metal parts Inox (Stainless Steel 316) for less static and improved GMP.
- ❖ Validation package available for cGMP compliance.
- ❖ Works with all capsules including gelatin, vegetarian/HPMC and starch capsules.

### **Compatible with Bench-top Filler**

- ❖ The 3600 grows with your requirements. Get the 3700 Bench-top Filler for larger batches and use the same Change Parts and Orienter purchased for the 3600.
- ❖ Continue to use the 3600 Filler Base for smaller batches or production under a powder hood or in a glove box.
- ❖ Add a Vibrator at any time.

### **Higher Output**

- ❖ Fully lock capsules after filling, unlike most hand-held fillers, saving you time and frustration!
- ❖ Inox (Stainless Steel 316) plates for reduced static.
- ❖ Tamper size range optimized for higher fill weights & faster filling. Optional 300-pin Tamper.
- ❖ Unique features include lightweight 2-piece Orienter, Orienter locator, Push Plate, and extra deep Powder Tray.

### **Faster Size Changes & Cleaning**

- ❖ Change capsule sizes in only 5 minutes. Change Parts available for Size 000-4 & 00el-2el.
- ❖ All parts are dishwasher safe. Can be dried in a hot air oven or with a portable hair dryer.
- ❖ Designed for fast disassembly & visual verification of cleaning.

### **Exclusive Accessories**

- ❖ Partial Batch Kit for filling fewer than 300 capsules / batch.
- ❖ Capsule Counter.
- ❖ Production Stand.
- ❖ Over-Encapsulation attachments for tablets, capsules, & caplets.
- ❖ Adjustable Height Bottom Plate to make over-filling easier and faster.

## Up to 4500 to 6900\* capsules/hour

\*based on powder, operator speed & number of taps/tamps.

Designed & Manufactured By:

# CAPSUGEL<sup>®</sup>

Toll Free Phone: 888-783-6361

[www.capsugel.com](http://www.capsugel.com)

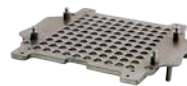
### 17 design elements that make the ProFiller<sup>®</sup> 3600 the Hand-Held Filler of Choice

● Ease of Use

◆ GMP

▲ Speed

## Fully Dishwasher Safe 2 minute Size Changeover



All metal parts Inox (316 Stainless Steel) for less static and improved GMP ◆ ▲



Adjustment-free Spacer Plate for fast size changes and consistent fill weight. ● ◆



Capsule slots: patented design laser cut for 100% capsule orientation. ● ▲

Orienter size change is adjustment free. ●

Only 2 screws from sides for size change. ●



Locating Pins in Orienter & locating holes in Filler for 100% capsule transfer into Filler. ● ▲



Cam Handle for fast capsule separation. ▲



Extra deep Powder Tray for fast spreading. ▲ ◆



Two full size Powder Spreaders ▲



Tamper 50/60-pin in optimum size ranges 00, 0-1, 2-3, 4, 5 & 000/00el (40-pin) for faster filling & higher fill weights. ▲

Self-Standing Tamper ◆



Powder Tray clamps for pharmacy ◆  
compounding or filling on optional Vibrator



Capsule Locker is size-specific. Speeds locking, prevents over-locking & capsule body dents

● ▲



Locking Plate with domes to prevent capsule cap dents ● ◆

Fully separates from Caps Tray for easy removal of filled capsules. ● ▲



Locked Capsule Indicator. ● ◆



### Special Fill Materials

#### **Powder Vibrator** – see [www.profiller.com/vibrators](http://www.profiller.com/vibrators) for when to use.

The optional Vibrator is especially helpful when filling certain materials:

- Fluffy and fine powders such as Charcoal.
- Powders that bridge such as Tyrosine or Calcium Carbonate.
- Powders that can stick to Tamper pins such as Frankincense or Dolomite.
- Granules where tamping can cause granules to break or compress such as Omeprazole.



#### **Filling Liquids**

Fill non-aqueous liquids only. After separating capsules, leave capsules in raised position. Fill capsules with a pipette or syringe. After filling, slowly push Cam Lever back to release capsule bodies so they are level with top surface of Filler. Continue with locking capsules. To keep capsules vertical during locking use the Liquid Fill Locking Plate (page 6).



R&D Stability or In-House Trials: keep capsules vertical to minimize leakage between the cap and body.

Compounding Pharmacies: seal capsules using capsule sealing tip [www.profiller.com/tips](http://www.profiller.com/tips).

Commercial Distribution: capsules require sealing using equipment purchased separately.

#### **Filling Sticky Powders**

Separate capsules and release Cam Lever so bodies are level with top surface of Filler. Before tamping powder, pull Cam Lever towards you until a gentle pressure holds capsules in place. This will prevent capsule bodies from being pulled up with Tamper during tamping.



#### **Over-encapsulation / Double Blinding of Tablets, Capsules and Caplets. (1100 Model Only)**

A full range of accessories is available (page 6). For size AAA-D capsules, ProFill OE and ProFiller 3700OE are available.



### Installing Change Parts



**No Tools  
Required**

ProFiller 3600 system's patented design requires no tools or adjustments to change capsule size.



1. Lift out Orienter Tray.



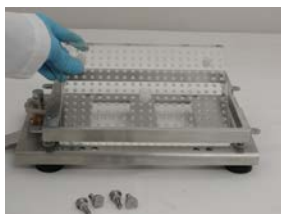
2. Slide new Orienter Tray in place.



3. Unscrew 4 thumbscrews from corners of Filler Base.



4. Remove Body Sheet Set.



5. Switch Spacer Plate.



6. Position new size Body Sheet Set on Filler Base.



7. Secure with four thumb screws.

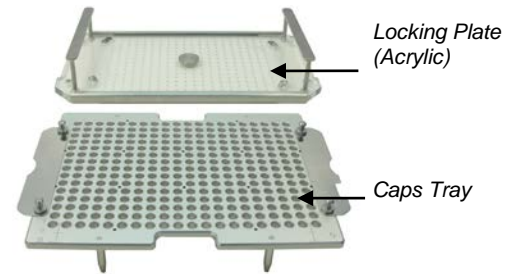


**Materials of Construction**

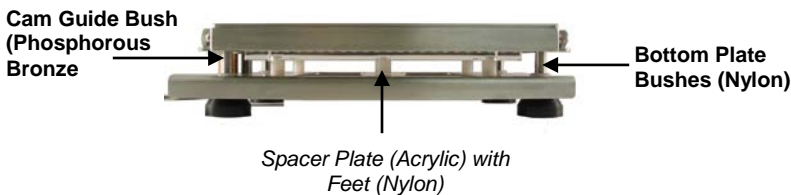
**All Parts Dishwasher Safe**



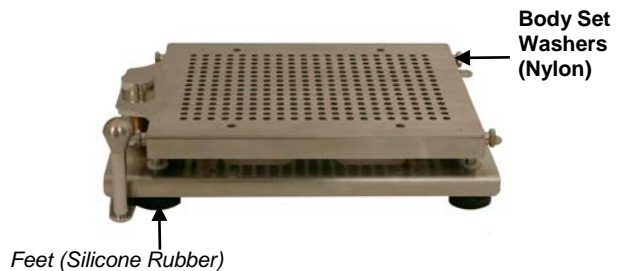
**Orienter**



**Caps Tray and Locking Plate**



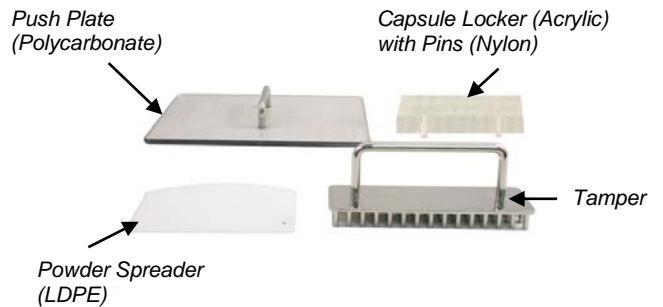
**Filler Base with Body Sheet Set (side view)**



**Filler Base with Body Sheet Set (top view)**



**Powder Tray and Clamps**



**Accessories**

Parts not otherwise labeled are made of Inox (Stainless Steel 316).

Nylon parts are known to discolor when used with Erythrosine. The Powder Spreader is known to discolor when used with Beta Carotene or Sunset Yellow.

**Cleaning & Drying Methods**

<b>Automatic Dishwasher</b>	All parts are fully dishwasher safe using automatic dishwasher detergents. Plastic parts should be placed in top rack (<70°C / 160°F).
<b>Cleaning Agents</b>	We recommend cleaning using household hand dishwashing liquid. All items may be cleaned with NaOH (caustic soda) 1-2% solution, 1% sodium thiosulphate solution, or liquid detergents with up to 4% sodium hypochlorite.
<b>Isopropyl Alcohol</b>	Wipe with a cloth dipped in isopropyl alcohol, then immediately wipe dry with a clean cloth. Do not use on Orienter Base, Locking Plate or Capsule Locker.
<b>Hot Air Drying</b>	Up to 60° C (140° F). Remove plastic parts from oven after 15-20 minutes. If using portable hair dryer, keep a distance of 12 inches (30 cm) from all items.
<b>Autoclave</b>	Do not autoclave Orienter Base, Locking Plate, Powder Tray, Spacer Plate, Powder Spreader, or Capsule Locker. Other parts may be autoclaved at 121°C, 15 psi pressure for 15 minutes.

Item Description	Capsule Size	Item #
------------------	--------------	--------

### 3600 Full System

Everything you need to fill one capsule size:

- Hand-Held Filler Base & Orienter Base
  - Change Parts for one capsule size
  - 60-pin Tamper
  - Locking Plate
  - Capsule Locker
  - Powder Tray
  - Powder Tray Clamps
  - Push Plate
  - Powder Spreaders
  - Measuring Bowls<sup>†</sup>
  - Storage Boxes<sup>†</sup>
  - Capsule Bins<sup>†</sup>
- <sup>†</sup>not shown in photo



Packed in two plastic storage Boxes

00	P6H HHS 00
0	P6H HHS 0
1	P6H HHS 1
2	P6H HHS 2
3	P6H HHS 3
4	P6H HHS 4
000 (180-hole)	P6H HHS 000
00el-2el	Email for more Information
5, AAA-D	Available in 1100/OE & 3700/OE

### Change Parts for Additional Sizes

Use table below only if you already fill any of sizes 00-4 or 00el-2el. Otherwise, contact us.

Change parts for one capsule size include:

- Body Sheet Set
- Caps Tray
- Capsule Locker
- Spacer Plate
- Orienter Tray

All Change Parts are Inox (Stainless Steel 316) include a plastic storage box.

\*Size 000 includes an Orienter Base & Capsule Locking Plate.



00	P6H CPS 00
0	P6H CPS 0
1	P6H CPS 1
2	P6H CPS 2
3	P6H CPS 3
4	P6H CPS 4
000 (180-hole)*	P6H CPCK 000
00el - 2el	Email for more Information
5, AAA-D	Available in 1100/OE & 3700/OE

### Tamper for Additional Size (optional)

60-Pin Tamper is Inox (Stainless Steel 316)  
36-Pin for sizes 000 & 00el.

See page 6 for Optional 300-pin.



00	P6H T60P 00
0-1	P6H T60P 0-1
2-3	P6H T60P 2-3
4	P6H T60P 4
000 (36-pin)	P6H T36P 000
5, AAA-D	Available in 1100/OE & 3700/OE

### Powder Vibrator

Recommended for faster filling of powders that bridge or are granular, fluid or flour-like. It also reduces weight variation of fine powders.

<sup>1</sup>Maybe used in East & West Japan



Voltage/Frequency	Item #
100-120 Volts /50-60Hz <sup>1</sup>	PM VIBHH 110V
220-240 Volts/50-60Hz	PM VIBHH 230V

### Combination Packages

#### Combo Package A

Choose 3 sizes from 00, 0, 1, 2, 3 or 4

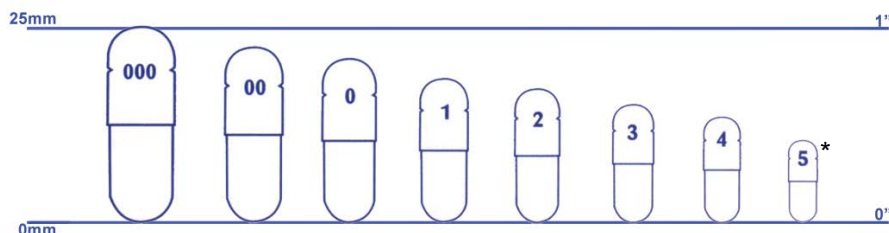
Includes 1 Full system + 2 Change Parts sets P6H NEC

#### Combo Package B

Choose 4 sizes from 00, 0, 1, 2, 3 or 4

Includes 1 Full system + 3 Change Parts sets P6H NEC

### Capsule Size Chart



\*For size 5 ask for information on ProFiller 1100 or ProFiller 3700.



### Optional Accessories

Item Description		Capsule Size	Item #
<b>Partial Batch Kit</b> Fill fewer than 300 capsules per batch. Includes Orienter Divider, Powder Tray Divider & Mini Powder Spreader. Order 30-pin Tamper separately.		All Sizes	P67 PBK
<b>30-pin Tamper</b> For use with ProFiller 3600 Partial Batch Kit. Tamper in Sizes 00, 0-1, 2-3, 4.		00-4	P67 T30P †
<b>300-pin* Tamper</b> For faster tamping. Tamper is 5-6 lbs (2.5-2.8 kg) and generally gives the same fill weight as the 60 pin tamper. Includes self-standing handle. Available in Sizes 00, 0-1, 2-3, 4. *180-pin tamper for 000-00el.		00-4	P3X T300P †
		000-00el	P3X T180P †
<b>Capsule Counters</b> Divide your batch of capsules into 3 groups of 100 capsules, 5 groups of 60 or 10 groups of 30. Anodized Aluminum.			P3X CTR 3X100
		00-5	P3X CTR 5X60
			P3X CTR 10X30
<b>Caps Tray</b> Purchase an additional Caps Tray. Note: Light-weight Anodized Aluminum Caps Tray is not Dishwasher Safe.		Anodized Aluminum	00-4 P67 CT AL †
		Inox (SS316)	00-4 P67 CT SS †
<b>Adjustable Height Bottom Plate</b> Increases fill weight by lowering capsule bodies. Lowering capsule bodies by 2 mm increases fill weight for many powders by 10-15% and for coarse or granulated powders that do not compress by 2-4%.		00-4	P6H BPHA 300
		000-00el	P6H BPHA 180
<b>Tap Densimeter</b> Used to determine tapped density for capsule filling. Eliminates calculation errors as volume is 1 ml.		All Sizes	PXX-TDM
<b>Over-Encapsulation Attachments</b> - See Page 3 for Tablet, Capsule or Caplet Over-Encapsulation			See Page 3

† Specify Capsule Size when ordering. Some accessories are not available for special sizes (000, 5, 00el-2el).

### Upgrade Option to a Bench-Top System

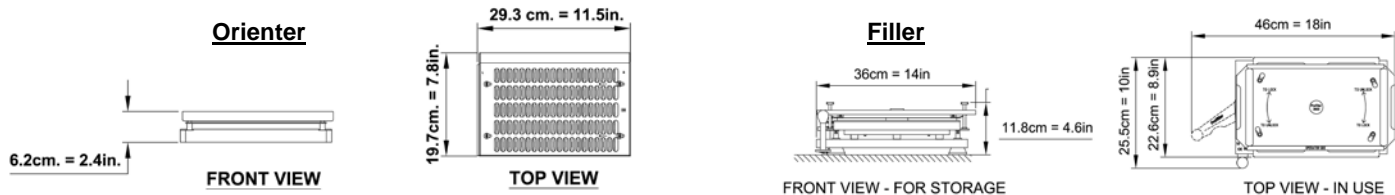


ProFiller 3600 grows with your requirements. Get the ProFiller 3700 Bench-Top Filler for larger batches and use the same Change Parts & Orienter purchased for the 3600.

You can continue to use the 3600 Filler Base for smaller batches or production under a powder hood or in a glove box. Purchase an additional Orienter Base and Change Parts to have two full systems.

For a video and more information on the ProFiller 3700 visit [www.profiller.com/3700](http://www.profiller.com/3700)

### Weight & Dimensions



Item	Boxes	Shipping Wt.		Net Wt.	
		kg	lbs	kg	Lbs
Complete System for one Capsule Size	Box 1/1	19.6	43.0	15.0	33.0
Extra Change Parts	Box 1/1	12.0	26.0	6.5	14.0
Extra Tamper	Box 1/1	1.0	2.0	0.5	1.0
Extra Tamper and Orienter Base	Box 1/1	2.5	6.0	1.7	4.0
Vibrator MPC6	Box 1/1	8.5	19.0	6.5	14.0

**1. Is a CE certificate Available?**

A "CE Declaration of Conformity" is included with each system. A CE certificate is included with the optional Vibrator.

**2. What is the output?**

Output is 2000-3200 capsules per hour for the 1100, and 2400-3600 for the 1120. Our engineers have designed over 15 features that make the ProFiller 1000 series the **fastest** and **easiest** hand-held filling systems on the market. The lower output is for fine powders. The higher output is for coarse free-flowing powders. Your results will vary based on the powder flow properties, operator speed & technique and use of excipients.

**3. How accurate are fill weights?**

Fill weights using the USP/EP method are within  $\pm 1-2\%$  of target. When weighed individually (a stricter standard than USP/EP), typically all capsules in a batch are within  $\pm 4-7.5\%$  of target. For more information visit [www.profiller.com/fw](http://www.profiller.com/fw).

**4. What types of capsules can I fill?**

We have successfully tested different brands and types of capsules including gelatin, HPMC (vegetarian) and pullulan (starch) capsules. Our 3 Body Sheet Set design enables 100% separation of vegetarian capsules.

**5. What size capsules can I fill?**

Sizes 00-4 can be filled on any ProFiller model. Sizes 000, 00el-2el and 5 can be filled on ProFiller 1100. Change parts can be ordered so you can fill additional sizes on the same system. For sizes AAA-D we offer the ProFill OE (100 hole hand-held) and ProFiller 3700OE (bench-top).

**6. How big is the system and where can I store it?**

For all three models the entire system can comfortably fit in a regular office desk drawer. For detailed dimensions visit [www.profiller.com/wd](http://www.profiller.com/wd).

**7. Can I over-encapsulate or double-blind tablets, capsules and caplets?**

Yes, you can with the ProFiller 1100. See page 6 for more information and special attachments.

**8. Can I fill liquids or sticky powders?**

The ProFiller system can be used to fill capsules with non-aqueous liquids or sticky powders. See Page 3 for tips, or visit [www.profiller.com/tips](http://www.profiller.com/tips) and follow the link for special fill materials.

**9. Can the ProFiller be cleaned in an automatic dishwasher?**

Yes, the entire system can be placed in an automatic dishwasher and is safe for use with automatic dishwasher detergents.

**10. What is the ProFiller system made of?**

See page 4 for the materials of construction.

**11. What is the shipping weight and size?**

See bottom of Page 6. For more detailed information visit [www.profiller.com/wd](http://www.profiller.com/wd).

**12. Is there a larger ProFiller available?**

Yes, the ProFiller 3600, 3700 & 3800 fill 300 capsules per cycle and have an output of up to 3-4X that of the ProFiller 1100. Visit [www.profiller.com](http://www.profiller.com).

**13. What are the maintenance requirements?**

We recommend daily cleaning, preferably washing, of the machine to remove any powder. At a minimum the cam and the cam bush on the underside of sheet "b" should be wiped clean of powder and lubricated with a food grade lubricant (e.g. Vaseline petroleum jelly).

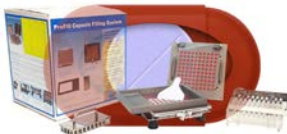
**14. What fill materials are known to discolor the ProFiller?**

Most fill materials will not discolor the ProFiller. See the Materials of Construction on page 4 for a list of materials known to discolor one or more parts of the ProFiller. If you have questions on a specific fill material contact us.

If you have additional questions that are not answered here, or you would like additional information, please visit [www.profiller.com](http://www.profiller.com). The website contains detailed information about using, cleaning, and caring for your ProFiller System



### Capsule Filling Equipment



#### ProFill OE - Handheld 100-hole Capsule Filler for AAA-D

Up to 1000-1500 doses/hour. Available in 100 holes for sizes AAeI, AA, A, B, D; and in 64 holes for AAA. Tablets that fit in C & E also fit in the next larger size capsule i.e. B & D.



#### ProFiller 3600 - Handheld 300-hole Capsule Filler

For the growing company and for use under powder hoods or in glove-box isolators. Fully locks capsules after filling. The only 300-hole hand-held you can upgrade as the Change Parts of the 3600 also fit the 3700 bench-top Filler. The same Orienter works with 3600 & 3700. Output up to 4500-6900 Capsules per hour. Available in Sizes 000-4 & all el sizes.



#### ProFiller 3700 - Bench-top\* Capsule Filler & Hand-held Orienter

Easiest bench-top system to set-up and use. Includes a hand-held Orienter. Up to 6000-9000 capsules per hour. Options include Partial Batch Kit and Vibrator. Available in Sizes 000-5, all el sizes & for sizes AAA-D as ProFiller 3700OE.

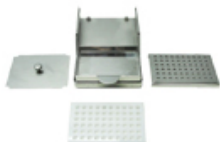


#### ProFiller 3800 - Bench-top\* Capsule Filler & European Style Orienter

Our bench-top system for those who prefer the traditional European style semi-automatic Orienter. Up to 6000-9000 capsules per hour. Optional Vibrator. Available in Sizes 00-4. Other sizes use a hand-held orienter.

*\*Bench-top Systems are designed for easier operation to enable continuous production. The 3700 includes our innovative hand-held orienter. For customers who use the traditional European style "semi-automatic" orienter we offer the 3800.*

### Other Equipment



#### ProCoater - Capsule / Caplet Film Coater

For R&D. Ideal for enteric or film coating small batches of capsules and caplets with solvent based coatings. For capsules sizes 00-3.



#### ProFunnel - Filling Funnel

For precision capsule filling on a balance. Includes Tamper. Made from Inox (316 stainless steel). Available in all capsule sizes including veterinary sizes.



#### ProTDM - Tap Densimeter

Used to determine tapped density for capsule filling. Eliminates calculation errors as volume is 1 ml.

### Powder Mixer (V-Blender)



#### ProMixer - Powder Blender

For consistent, gentle and uniform mixing of powders in 5-10 minutes. Shells available in "V" or Drum shape in sizes from 130ml to 10L. Shells are in Inox (SS316) for smoother powder flow & easy cleaning.

