

Lonza Engine™
Accelerate Innovation

Xcelolab™

Laboratory Powder
Dispenser



Lonza

A fast, flexible and specifically designed dispenser for laboratories to perform accurate, closed loop, weight dispensing with any powder

Features and Benefits

Easy to use

Simple, touchscreen operation
Users to run a fully automated dispense cycle or manual dispense

Fast and flexible system

Dispense any dry powder including cohesive free-flowing, micronized or inhalation powder
Dispense into a variety of receptacles subject to limitations of chosen balance
Balances easily interchangeable and provide flexibility in dispensed amounts
Optimize dispense parameters and store for different materials
Accurate and repeatable output in a matter of seconds

Provides operator protection from potent materials

Xcelohood™ containment system option available

Enable to ease dispensing of hygroscopic materials

Relative Humidity control unit option available

Easy to clean /Cleaning validation

Suitable for wet cleaning agents
Smooth surfaces
316 stainless steel used for all product contact parts
Stainless steel and hard anodized surfaces with smooth edges
Product contact parts easily removed for cleaning and sterilization if required
Surfaces can be cleaned with a range of cleaning solutions
Dispense heads can be cleaned for re-use and swapped over quickly

Select the Micro-dosing System that meets your needs

			
	XCELOLAB™ DISPENSER	XCELODOSE® 120 S SYSTEM	XCELODOSE® 600 S SYSTEM
Throughput	Single dispense	Up to 200 capsules per hour { dependent on operator input }	600+ capsules per hour High throughput unit for long runs and greater fill weights
Capsule Handling	Manually loaded Automatically filled { semi-automatic indexing with carousel option }	Manually loaded with dosing carousel customised to suit requirements Semi-automatic indexing	Fully automatic capsules handing and filling
Dose Form	Blister, bottle, capsule, cartridge, cassette, tube, vial, bespoke on request	Blister, capsule, cartridge, cassette, tube, vial, bespoke on request	Capsule only - sizes 00 to 4
Capsule Types	Gelatin, HPMC, pullulan	Gelatin, HPMC, pullulan	Gelatin, HPMC, pullulan
Footprint	Dispensing system: 575 x 430 mm control unit: n/a	Dispensing system: 565 x 385 mm control unit: 600 x 600 mm	Dispensing system: 670 x 385 mm control cabinet: 600 x 600 mm
Material Type	Powders, granules and beads	Powders, granules and beads	Powders, granules and beads
Material Properties	Cohesive, free-flowing, micronized, inhalation powder	Cohesive, free-flowing, micronized, inhalation powder	Cohesive, free-flowing, micronized, inhalation powder

Technical Support and Service

Lonza's experienced service and support team will provide installation, validation packages and on-site training as requested. Also available are ongoing support and preventative maintenance agreements to keep your Lonza Engine™ equipment operating at optimal efficiency. For more information on services by our dedicated team of engineers and technicians contact your Lonza sales representative or visit www.lonza.com.

Xcelolab™ Precision Powder Dispensing System

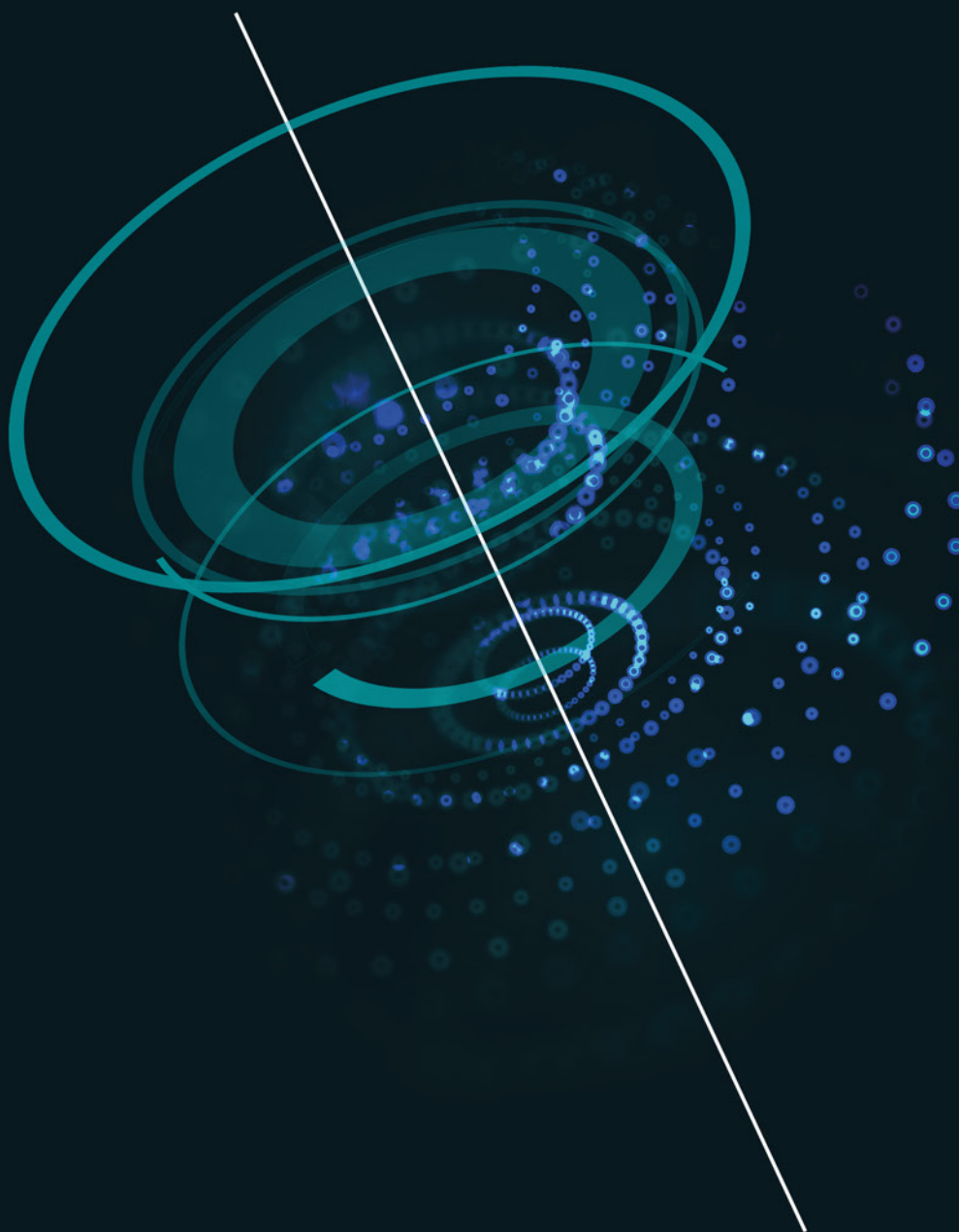
Specifications

DISPENSING			
Dispense Range	<100µg to several grams { range varies depending on balance fitted }		
Dispense Cycle	Approximately 5 seconds { depending on material }		
Dose Form	Capsule { including PCcaps®, Coni-Snaps® and Vcaps® Plus capsules }, cartridge, cassette, blister, vial, tube, beaker, flask, syringe, bespoke { please enquire }, maximum receptacle height: Xcelolab™ 190mm, Xcelodose® 120S 40mm		
Static	Optimised to prevent static to ease dispensing		
Material Type	Any type of powder including granules, beads, precious metals, seeds, pellets, enzymes/probiotics, cohesive free-flowing, micronized or inhalation powders		

WEIGHING			
Accuracy	Typically 1-2% RSD 1% when automatically repeat filling using stored proven method		
Balance Options	<i>Sartorius Options</i>	<i>Capacity (grams)</i>	<i>Readability (mg)</i>
Microbalances	MME2	2	0.0001
	MME10	10	0.001
Laboratory Balance	CPAD225D	220	0.1
<i>All Sartorius balances are interchangeable and have been specially adapted for optimum performance in the Xcelolab™ powder dispenser and Xcelodose® system</i>			

DATA	
Password Protected Logon	Yes
Recording Option	Yes
Data Processing	Validity of entered parameters Retains last used parameters Entry, save and recall of complete method/recipe parameters in same format as existing Xcelodose® system Method development screen layouts to mimic Xcelodose® system counterparts On-screen display of parameters, machine status and final dispense Graphical display of dispensed weight during manual dispense Exports data to .txt file Option to print or export dispense reports to external source Display of dispense graphs for method development Export of individual dispense data for analysis { powder characterisation } Data capture to batch and run reports similar to Xcelodose® system Printer and label printing options

DIMENSIONS & UTILITIES	
Footprint	Width: 430mm Depth: 875mm { allowing access to front control panel and near electrical components }
Dimensions	Short version: 430 x 575 x H 445 { closed } / 780 { Open } Tall Version: 430 x 575 x H 560 { closed } / 875 { Open }
Weight	40 kg
Power Requirements	100-220 V AC, 5A



Lonza

To order now or to obtain more information
about the equipment:

Visit: www.capsugel.com

Email: solutions.emea@lonza.com /
solutions@lonza.com

Call: +33 3 89 20 57 25 / 800-845-6973

Or contact your Lonza representative

All product information corresponds to Lonza's
knowledge on the subject on the date of publication,
but Lonza makes no warranty of any sort, including
with regard to its accuracy or completeness and
Lonza assumes no obligation whatsoever, including
any obligation to update it. All trademarks belong to
Lonza or its affiliates. ©2019

LIT201906011